



User Manual

AMETEK®

ELECTRONIC SYSTEMS PROTECTION

ADVANCED SERIES MODE®	ECOMMANDCENTER®	FLATPAK™	NEXT GEN®	SURGE + PDU™
AXESS®	ELIMINATOR SERIES™	ICE®	PCS™	SURGE ELIMINATION®
CERVELLA™	EMPOWER®	IMPEDANCE TOLERANT™	POWERFRAME®	SURGEX®
COUVS®	ENERGY INTELLIGENCE®	INRUSH CURRENT ELIMINATION®	REMOTE PORTAL®	SURGEXICE®
DEFENDER SERIES®	ENVISION®	MULTIPAK®	SERIES MODE®	
DIGITAL QC®	ESP®	MULTI-STAGE™	SURGE + DIAGNOSTIC™	

This product may be covered by one or more claims of the following patents or published patent application:

U.S. Patent Nos.: RE39,466; 4,870,528; 4,870,534; 5,136,455; 6,040,969; 6,728,089; 6,744,613; 6,947,266; 7,068,487; 7,184,252; 7,511,934; 7,541,696; and 7,551,412; 8,482,885; 8,520,349; 8,547,672; and 8,614,866

U.S. Patent Application Publication Nos.: 2012/0221161; 2013/0073232; 2012/0265361; 2013/0073060; 2013/0258538; and 2014/0005963

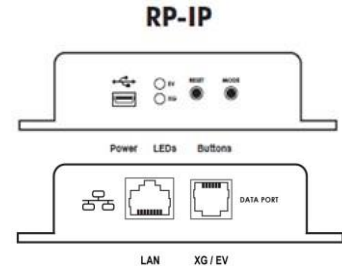
Canadian Patent Nos.: 1,332,439; 1,333,191; 2,461,332 and 2,511,695

I.	<u>HARDWARE</u>	<u>3</u>
1.	RP-IP	3
2.	RP-IP-GNS	3
II.	<u>SETUP AND CONFIGURATION</u>	<u>4</u>
3.	IP SETTINGS AND CONFIGURATION	4
4.	LAN OPERATION AND CONFIGURATION	4
5.	WAN CONFIGURATION	9
III.	<u>OPERATION</u>	<u>9</u>
1.	STANDOARD	9
2.	JAVA APPLET	10
3.	SNMP	10
4.	COM PORT REDIRECTION	10
IV.	<u>ADVANCED CONFIGURATION</u>	<u>7</u>
V.	<u>FIRMWARE UPGRADE</u>	<u>8</u>
V.	<u>SPECIFICATIONS</u>	<u>8</u>

I. HARDWARE:

1. RP-IP

- a. LAN: Connect to local network using Cat5e patch cable
- b. XG / EV Data Port: Connect to XG or EV product using 6p6c RJ25 patch cable with Standard pin out
- c. Power: Input power connection. USB Mini B, 5VDC, 500mA minimum
- d. LEDs:



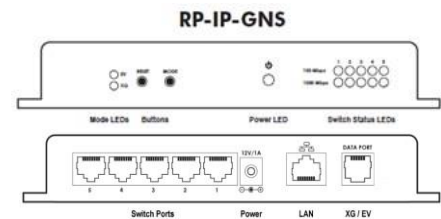
LED State	Meaning
EV, XG Toggle	Establishing network connectivity
EV solid, XG off	enVision operating mode
XG solid, EV off	Next Gen operating mode

- e. Buttons:

Button	Action
Reset	Press and hold for 5 seconds, then release to reset the unit to factory defaults. Will reset IP settings to factory default.
Mode	Press and hold for 5 seconds, then release to toggle between EV and XG operating modes

2. RP-IP-GNS

- a. LAN: Connect to local network using Cat5e patch cable
- b. XG / EV Data Port: Connect to XG or EV product using 6p6c RJ25 patch cable with Standard pin out
- c. Power: Input power connection. Barrel, 12VDC, 1A minimum
- d. LEDs:



LED State	Meaning
EV, XG Toggle	Establishing network connectivity
EV solid, XG off	enVision operating mode
XG solid, EV off	Next Gen operating mode
Switch Status	Link/Activity LEDs for each switch port
Power	RP-IP-GNS Power Indicator

- e. Buttons:

Button	Action
Reset	Press and hold for 5 seconds, then release to reset the unit to factory defaults. Will reset IP settings to factory default.
Mode	Press and hold for 5 seconds, then release to toggle between EV and XG operating modes

II. SETUP AND CONFIGURATION:

1. IP Settings and Configuration

- a. Factory Default: Acquires IP address automatically via DHCP
- b. Determine assigned IP address by one of the following methods:
 - i. Access router table
 - ii. Download and run ESP RP-IP Discover Utility available on the Downloads tab here: <http://espsurgex.com/product/remote-portal/>
 - iii. Download and install Lantronix DeviceInstaller: <http://www.lantronix.com/device-networking/utilities-tools/device-installer.html>

2. LAN Operation and Configuration

- a. Using a web browser with JavaScript enabled, navigate to <http://IPAddress/config> where the IPAddress is the IP Address of the RP-IP.
 - i. When prompted for a User Name and Password, leave both fields blank and press **Log In**.
 - ii. **Important:** For any changes to be applied, press the **OK** button at the bottom of the section, then press **Apply Settings** in the left hand menu, and finally wait for the RP-IP to reboot with new settings in place.
 - iii. **Home Page:** View firmware and configuration information currently in use.

The screenshot shows a web browser window with the URL 10.1.2.78/secure/lbx_conf.htm. The page displays the ESP SURGEX logo and the title "Device Status". A left-hand navigation menu includes options like "Network", "Server", "Apply Settings", and "Apply Defaults". The main content area shows a table of configuration parameters:

Product Information	
Firmware Version:	V6.9.0.3
Build Date:	02-Sep-2014
Network Settings	
MAC Address:	00-80-A3-9C-87-8F
Network Mode:	Wired
DHCP HostName:	< None >
IP Address:	10.1.2.78
Default Gateway:	10.1.2.1
DNS Server:	10.1.2.11
MTU:	1400
Device Type	
PCS:	enVision

At the bottom of the page, it says "WebManager Version: 2.0.0.5".

- b. Network Settings: View and change IP Configuration.

- i. Select **Obtain IP address automatically** to automatically receive an IP address
- 1) BOOTP: Select Enable to permit the Bootstrap Protocol (BOOTP) server to assign the IP address from a pool of addresses automatically. Enable is the default.
 - 2) DHCP: Select Enable to permit the Dynamic Host Configuration Protocol (DHCP) to assign a leased IP address to the RP-IP automatically. Enable is the default.
 - 3) AutoIP: Select Enable to permit the RP-IP to generate an IP in the 169.254.x.x address range with a Class B subnet. Enable is the default.
 - 4) DHCP Host Name: Enter the desired host name for the RP-IP.

- ii. Select **Use the following IP configuration** to manually specify the IP address.
 - 1) IP Address: If DHCP is not used to assign IP addresses, enter it manually in decimal-dot notation. The IP address must be set to a unique value in the network.
 - 2) Subnet Mask: A subnet mask defines the number of bits taken from the IP address that are assigned for the host part.
 - 3) Default Gateway: The gateway address, or router, allows communication to other LAN segments. The gateway address should be the IP address of the router connected to the same LAN segment as the unit. The gateway address must be within the local network.
 - 4) DNS Server: The DNS server allows the name of a remote machine to be resolved automatically. Enter the IP address of the DNS server. If the device is DHCP enabled, the DHCP server provides the DNS server IP address, which will override this configured value.
Note: This setting is applicable only in Manual Connection mode.
- iii. SNMP
 - 1) Select **Enable** or **Disable** to enable or disable the SNMP protocol.
 - 2) SNMP Manager: Specify the IP address of the SNMP manager.
 - 3) The SNMP MIB may be downloaded on the Downloads tab on this page:
<http://espsurgex.com/product/remote-portal/>
- iv. Ethernet Configuration
 - 1) Auto Negotiate: With this option, the Ethernet port auto-negotiates the speed and duplex with the hardware endpoint to which it is connected. This is the default.
 - 2) Speed: The speed of data transmission. The default is 100 Mbps. This option is only available when Auto Negotiate is not enabled.
 - 3) Duplex: The direction of data transmission. The default is Full. This option is only available when Auto Negotiate is not enabled.

- c. **Server:** View and change the embedded Server settings.

The screenshot shows a web browser window with the URL 10.1.2.84/secure/ltx_conf.htm. The page title is 'Server Settings' and it features the ESP and SURGEX logos. A left-hand navigation menu includes 'Network', 'Server', 'Apply Settings', and 'Apply Defaults'. The main content area is divided into three sections:

- PCS Communication:**
 - Mode: enVision (EV)
 - TCP Server Port: 10001
 - TCP Remote Port: 10001
 - Auto Transmit: Enable Disable
 - Active Connect: With Auto Transmit
 - Remote Host: 52.5.12.33
- Server Configuration:**
 - Enhanced Password: Enable Disable
 - Telnet/Web Manager Password: [text input]
 - Retype Password: [text input]
- Advanced:**
 - ARP Cache Timeout (secs): 600
 - TCP Keepalive (secs): 45
 - Monitor Mode @ Bootup: Enable Disable
 - CPU Performance Mode: Low Regular High
 - HTTP Server Port: 80
 - Config Server Port: 30718
 - MTU Size: 1400
 - TCP Re-transmission timeout (ms): 500

An 'OK' button is located at the bottom right of the settings area. The footer of the page indicates 'WebManager Version: 2.0.0.6'.

i. **PCS Communication**

- 1) **Mode:** Select enVision (EV) or NextGen (XG) operational mode.
- 2) **TCP Server Port:** Specify the local port for serial data.
- 3) **TCP Remote Port:** Specify the Remote Host port for serial data.
- 4) **Auto Transmit:** Enable/Disable the Auto Transmit feature. When enabled, enVision or NextGen will automatically transmit data to the IP address specified in Remote Host. Contact ESP/SurgeX for more details.
- 5) **Active Connect:** Specify how the RP should initiate an active connection to a Remote Host. None: do not actively connect; With Auto Transmit: connect when auto transmit data segment received from EV or XG; Auto Start: connect after booting up.

- 6) Remote Host: Specify the IP Address of the Remote Host.
- ii. Server Configuration
 - 1) Enhanced Password: Selecting this option enables advanced password creation, allowing you to create passwords up to 16 bytes in length. Disabling this option disables advanced password creation, allowing you to create basic passwords up to 4 bytes in length.
 - 2) Telnet/Web Manager Password: Enter the password required for Telnet configuration and Web Manager access.
 - iii. Advanced
 - 1) ARP Cache Timeout: When the unit communicates with another device on the network, it adds an entry into its ARP table. ARP Cache timeout defines the number of seconds (1-600) before it refreshes this table.
 - 2) TCP Keepalive: TCP Keepalive time defines how many seconds the unit waits during an inactive connection before checking its status. If the unit does not receive a response, it drops that connection. Enter a value between 0 and 60 seconds. 0 disables keepalive. The default setting is 45.
 - 3) Monitor Mode @ Bootup: Select Disable to disable entry into the monitor mode using the 'yyy' or 'xx1' key sequence at startup. This field prevents the unit from entering monitor mode by interpreting the stream of characters that are received during the device server's initialization at startup.
 - 4) CPU Performance Mode: Do not adjust. Default is Regular.
 - 5) HTTP Server Port: This option allows the configuration of the web server port number. The valid range is 1-65535. The default port is 80.
 - 6) Config Server Port: Not applicable.
 - 7) MTU Size: The Maximum Transmission Unit (MTU) is the largest physical packet size a network can transmit for TCP and UDP. Enter between 512 and 1400 bytes. The default is 1400 bytes.
 - 8) TCP Re-transmission timeout: The desired TCP re-transmission timeout value. If the ACK is not received for a packet sent from the RP-IP device, then the unit will retransmit the data. The valid range is 500-4000 msec. The default is 500 msec.
 - d. Apply Settings: Applies the currently specified settings.
 - e. Apply Defaults: Reset the unit to factory defaults. Will not modify IP settings.

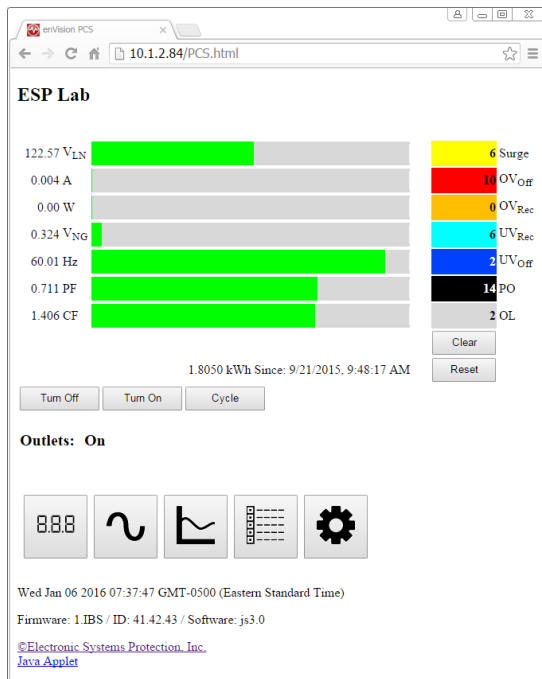
3. WAN Configuration

- a. To access the RP-IP Java applet from outside of the local network, the following 2 ports must be forwarded through the firewall to the internal IP address of the RP-IP:
 - i. HTTP Server Port (Default 80)
 - ii. TCP Server Port (Default 10001)
- b. To access the RP-IP standard pages from outside of the local network, the following port must be forwarded through the firewall to the internal IP address of the RP-IP:
 - i. HTTP Server Port (Default 80)

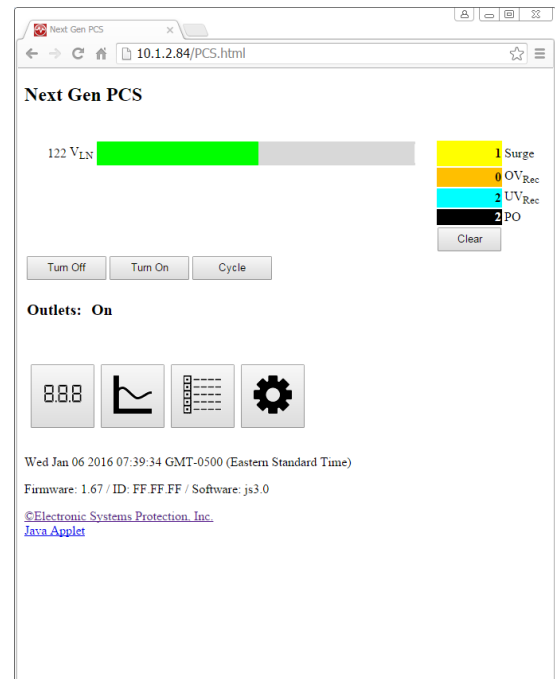
III. OPERATION:

1. Standard

- a. The standard pages may be utilized on desktop and mobile browsers, and require that JavaScript be enabled.
- b. Using a web browser, navigate to the IP address of the RP-IP. Include the HTTP Server Port if set to a value other than 80 in this format: <http://IP:PORT>
- c. Refer to the enVision Software User Manual for information regarding software operation: <http://espsurgex.com/product/envision/>



enVision PCS Mode



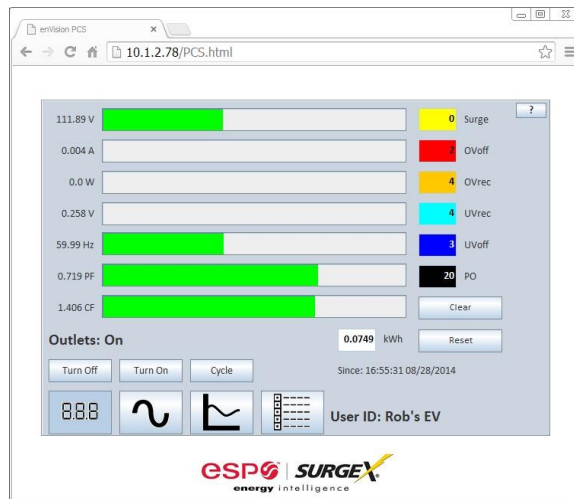
Next Gen PCS Mode

2. Java Applet

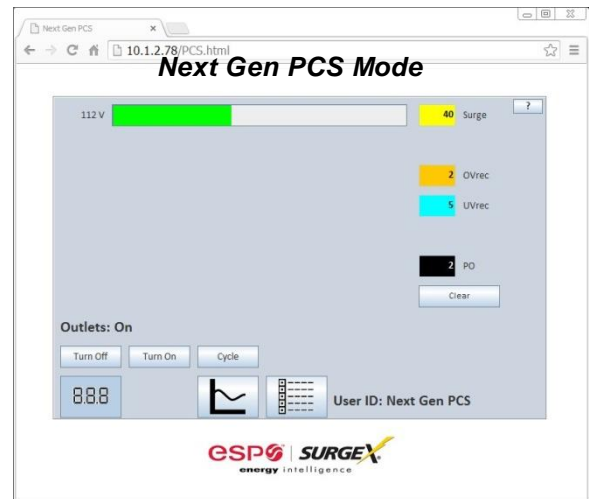
- a. Download and install the current JRE from: www.java.com

Java applet operation requires a computer with an operating system which supports the installation of a Java Runtime Environment (JRE), including MS Windows, Apple OSX, and various Linux distributions.

- b. Using a web browser, navigate to the IP address of the RP-IP and click the “Java Applet” link at the bottom of the Standard pages. Include the HTTP Server Port if set to a value other than 80 in this format: <http://IP:PORT>



enVision PCS Mode



Next Gen PCS Mode

- c. Refer to the enVision Software User Manual for information regarding software operation: <http://espsurgex.com/product/envision/>

3. SNMP

- a. The RP-IP and RP-IP-GNS provide monitoring and control via SNMP. The SNMP MIB may be downloaded here: <http://espsurgex.com/product/remote-portal/>

4. COM Port Redirection

- a. The RP-IP and RP-IP-GNS may also be used with COM Port Redirection software and the standard Next Gen PCS and enVision PCS desktop software applications. Refer to the COM Port Redirect Application Note here: <http://espsurgex.com/product/remote-portal/>

IV. ADVANCED CONFIGURATION:

1. Advanced settings may be adjusted via Telnet on port 9999.

a. Upon establishing a connection, the following information is displayed:

```

*** ESP PCS ***
MAC address 0080A39C878F
Software version V6.9.0.3 (140902) CPK6903_XPT05

Press Enter for Setup Mode
    
```

b. To enter Setup Mode, press Enter within 5 seconds. The configuration settings display, followed by the Change Setup menu:

```

enVision (EV) Mode

*** basic parameters
Hardware: Ethernet TPI
IP addr - 0.0.0.0/DHCP/BOOTP/AutoIP, no gateway
SNMP Manager not set
DHCP device name : not set
*** Security
SNMP is          enabled
SNMP Community Name: public
Telnet Setup is  enabled
TFTP Download is enabled
Port 77FEh is   enabled
Web Server is   enabled
Web Setup is    enabled
ECHO is        disabled
Enhanced Password is disabled

***** Channel 1 *****
Connect Mode   : C0
Source Port    : 10001
Destination Port : 00000
Destination IP  : 0.0.0.0
CPU performance : Standard

Change Setup:
0 Server configuration
1 Channel 1 configuration
5 Debug
6 Security
7 factory defaults
8 exit without save
9 save and exit      Your choice ?
    
```

c. Select an option on the menu by entering the number of the option in the **Your choice ?** field and pressing **Enter**.

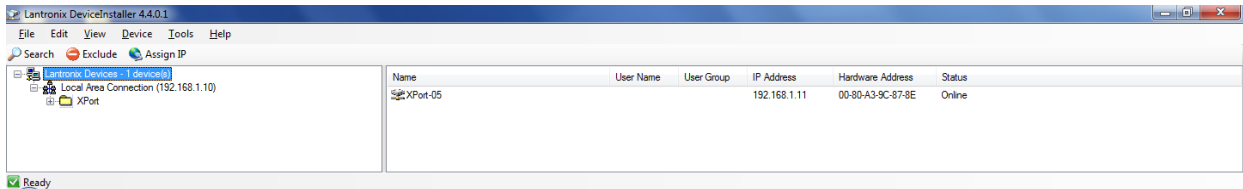
d. To enter a value for a parameter, type the value and press **Enter**, or to confirm a current value, just press **Enter**.

e. Important: When you are finished, save the new configuration (option 9). The unit reboots.

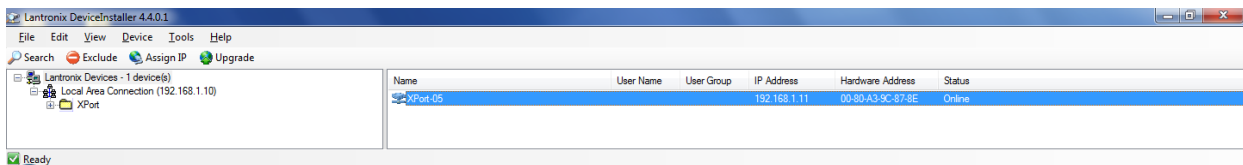
- f. Server configuration: Allows for the configuration of the following parameters:
- IP Address
 - Gateway IP Address
 - Netmask
 - SNMP Manager IP Address
 - Telnet configuration password
 - DHCP device name
 - DHCP FQDN option
- g. Channel 1 configuration: Allows for the configuration of the following parameters:
- Connect Mode (Do not modify. Default is C0.)
 - Source Port
 - Destination Port (Currently Unused)
 - Destination IP (Currently Unused)
 - Enable Pack Control (Do not modify. Default is No.)
 - Disconnect Time
- h. Debug: Not intended for general use. Enables EV/XG data communication debug.
- i. Security: Allows for the configuration of the following parameters:
- Disable SNMP
 - SNMP Community Name
 - Disable Telnet Setup
 - Disable TFTP Firmware Update
 - Disable Port 77FEh (configuration port)
 - Disable Web Server
 - Disable Web Setup
 - Disable ECHO ports
 - Enable Enhanced Password
 - Use Encryption (Currently Unused)
- j. Factory defaults: Reset the unit to factory defaults. Will not modify IP settings.
- k. Exit without save: Exits and terminates telnet session without modifying parameters.
- l. Save and exit: Stores parameters and reboots with new parameters in place.

V. FIRMWARE UPGRADE:

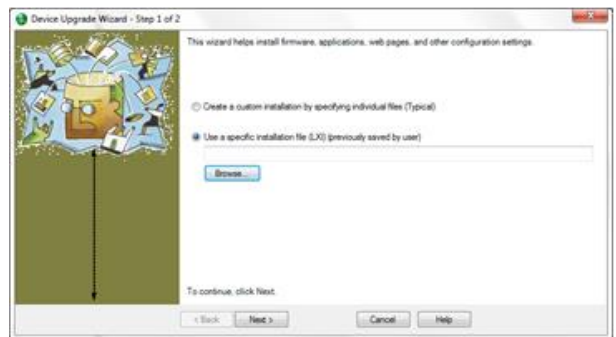
1. Download and install the Lantronix Device Installer: <http://www.lantronix.com/device-networking/utilities-tools/device-installer.html>
2. Download the Remote Portal firmware file (*.ixi format): <http://espsurgex.com/product/remote-portal/>
3. Start the Lantronix Device Installer. The RP should be automatically detected, and listed on the right side with a name of "XPort-05"



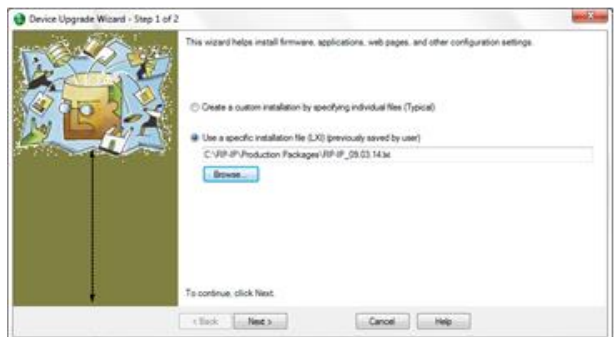
4. Select the unit by clicking on its name, and then press the "Upgrade" button now available on the top menu bar



5. A Device Upgrade Wizard window will open
 Select "Use a specific installation file..." and then click the "Browse" button



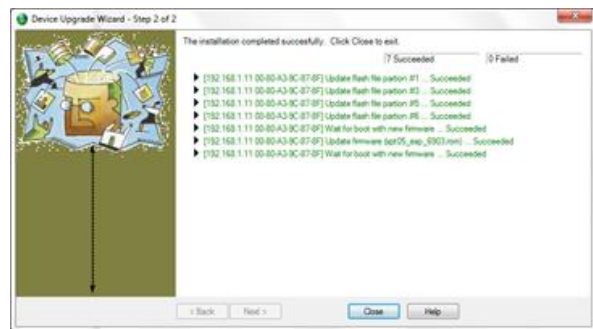
6. Navigate to the firmware file (*.ixi), select it, and press the "Open" button



- Click the “Next” button on the wizard to begin the upgrade process



- Close the Device Upgrade Wizard when the upload process is complete, and then close the Device Installer Utility



VI. SPECIFICATIONS:

Parameter		Specification
Power Requirement	RP-IP	5VDC, 2W
	RP-IP-GNS	12VDC, 2W
Network Interface		RJ45 Ethernet 10BASE-T or 100BASE-TX (auto-sensing)
Protocols Supported		ARP, TCP/IP, Telnet, SNMP, DHCP, BOOTP, TFTP, Auto IP, and HTTP
LEDs		10BASE-T & 100BASE-TX Link Activity, Full/half duplex. EV/XG mode indicators.
Dimensions	RP-IP	3.38" W x 2.2" D x 0.9" H
	RP-IP-GNS	6.5" W x 2.75" D x 1" H
Weight	RP-IP	0.2 lbs.
	RP-IP-GNS	0.5 lbs.
Temperature Range		5C to 40C
Humidity Range		5% to 95% R.H. Non-condensing
Agency Listings	RP-IP	ETL Certified to UL 60950-1
	RP-IP-GNS	